



Antoine Khalil

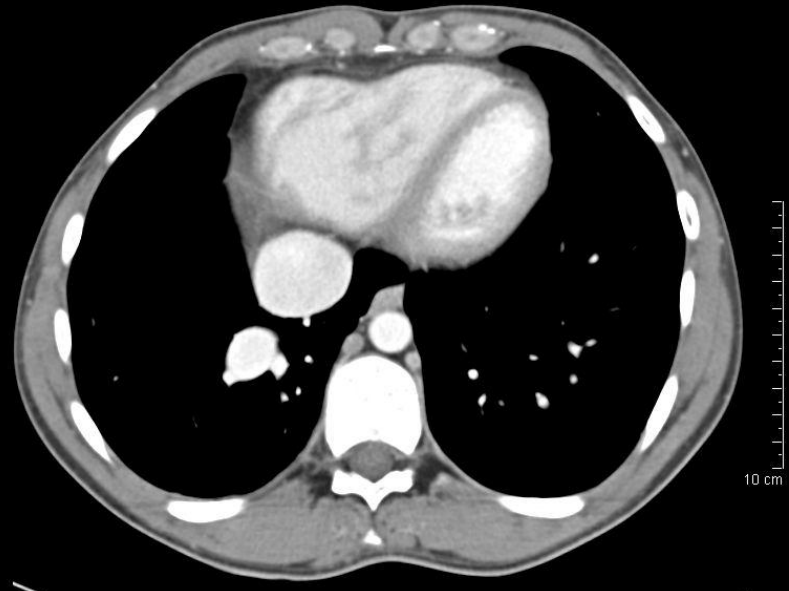
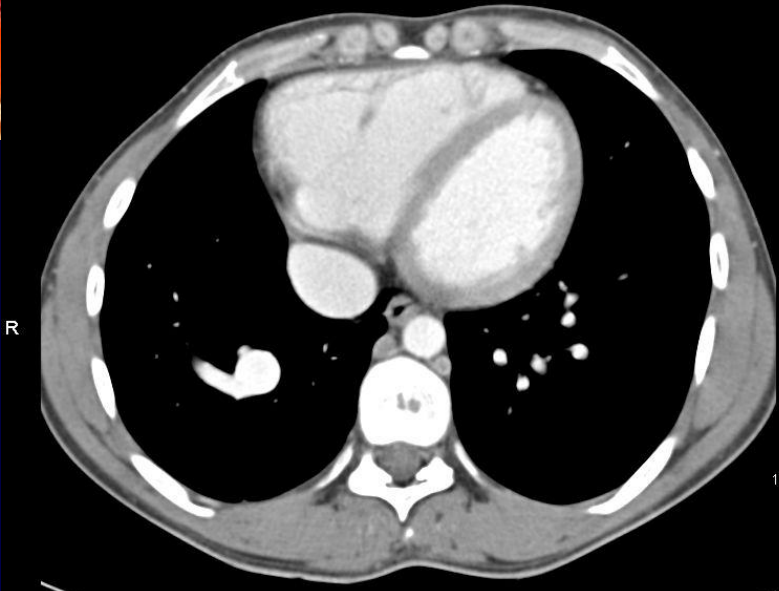
Mr K âgé de 34 ans dépressif est hospitalisé pour
une hémoptysie de 40 mL survenant après un
premier épisode de 200 mL il y a 4 jours





A pertes

A pertes



A pertes

A pertes

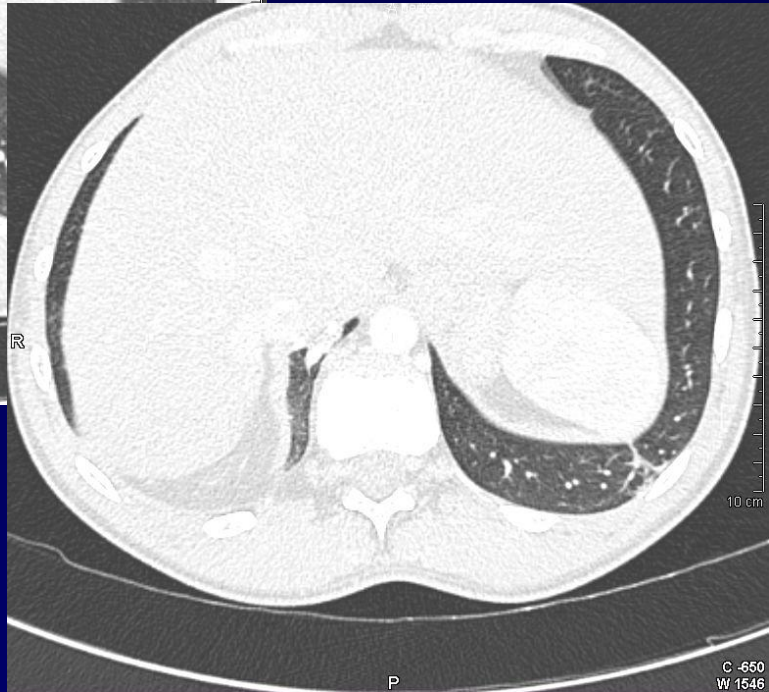


P

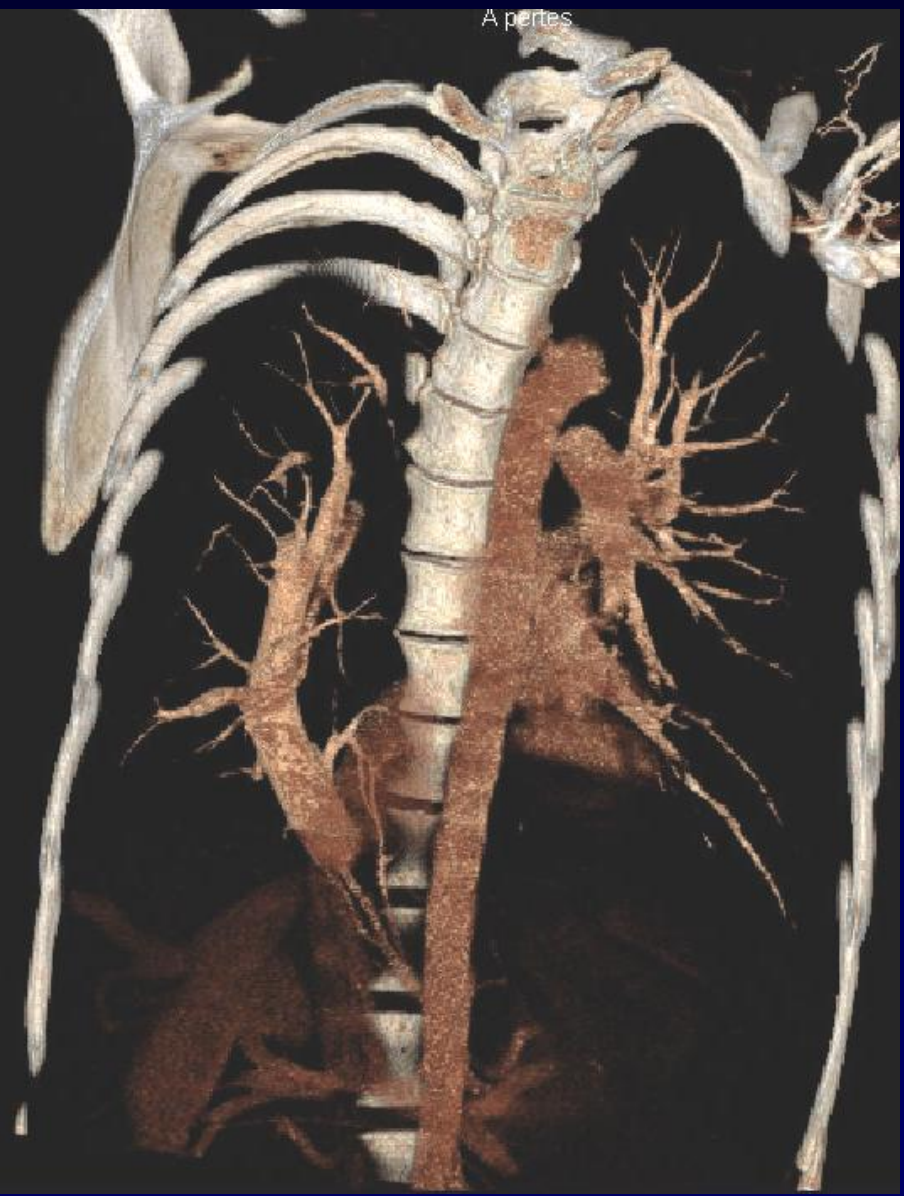
C 20
W 400

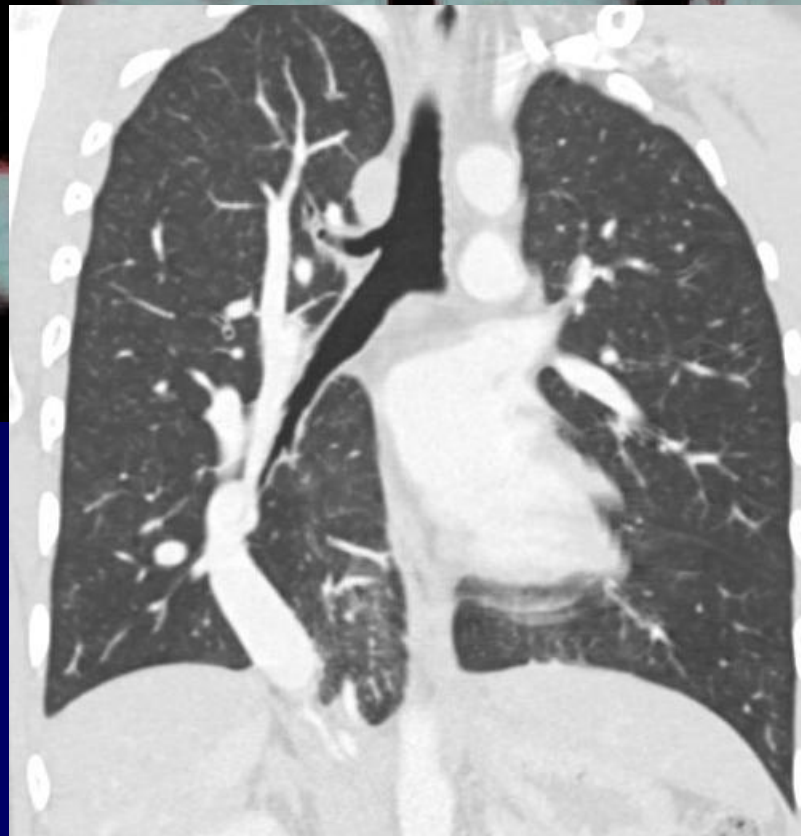
P

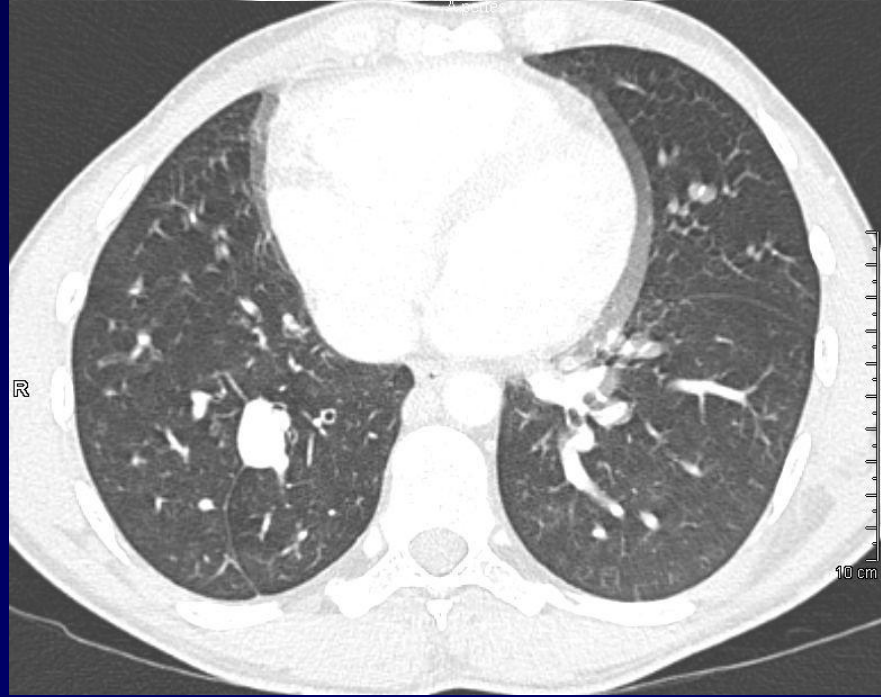
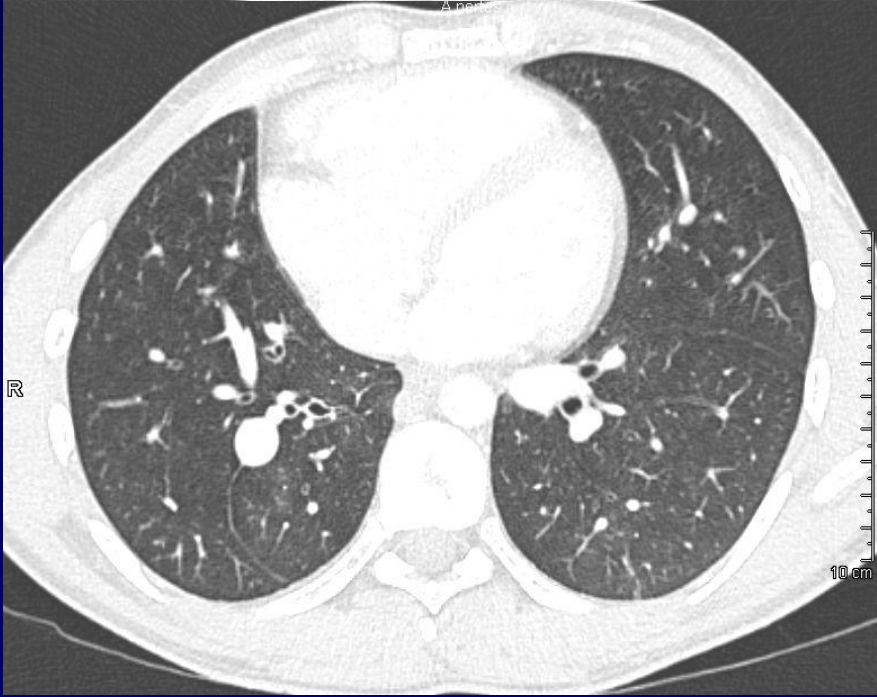
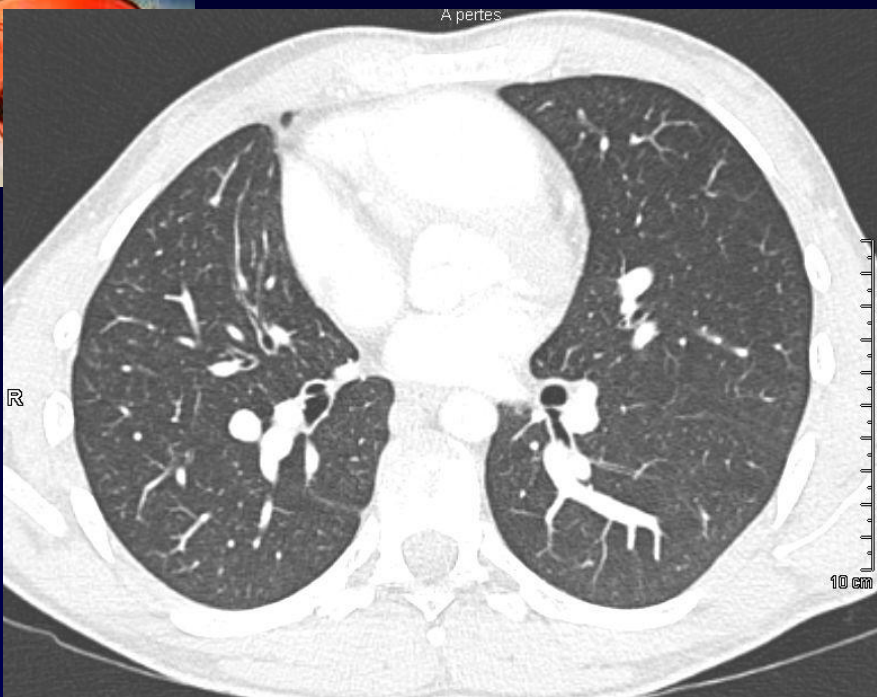
C 20
W 400

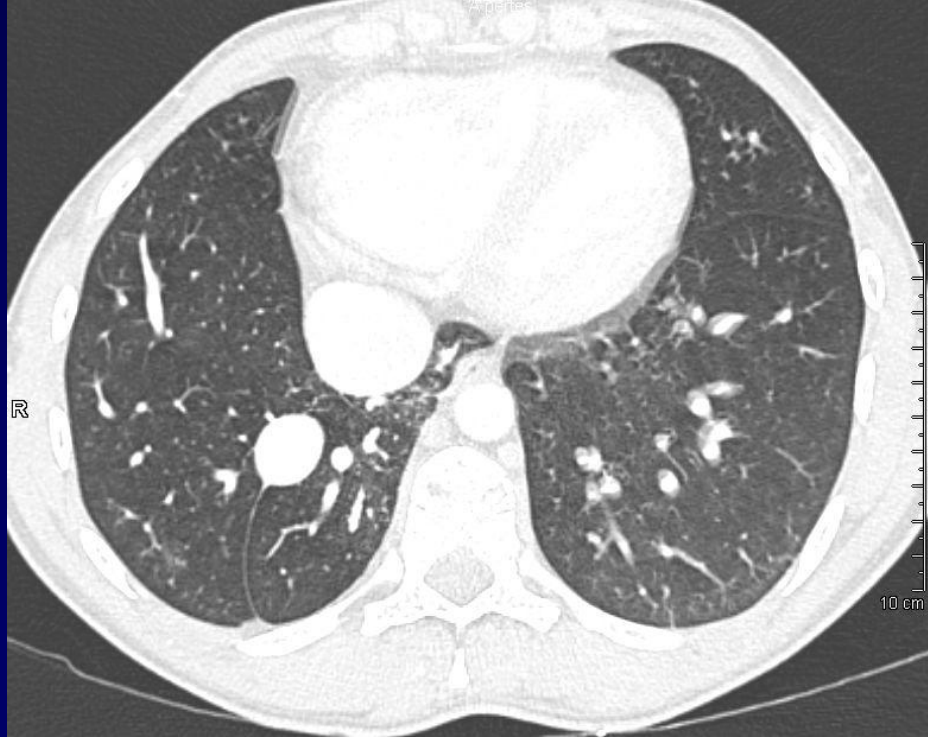
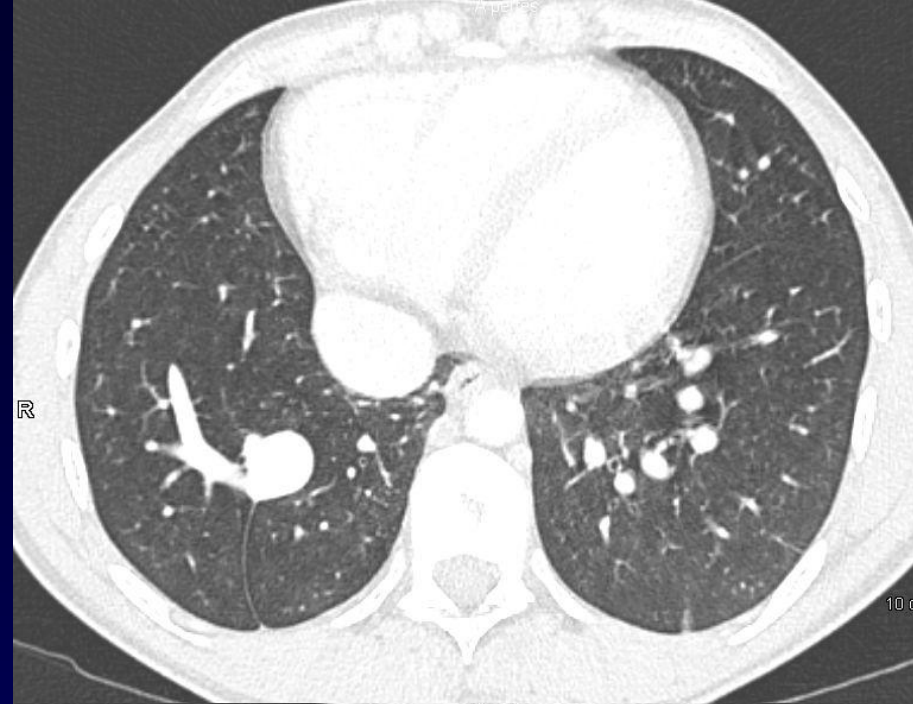


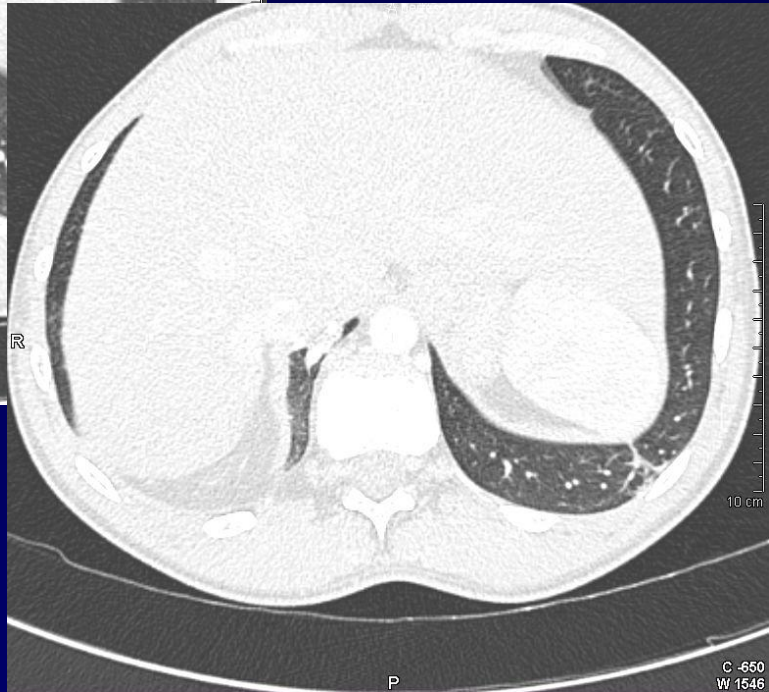
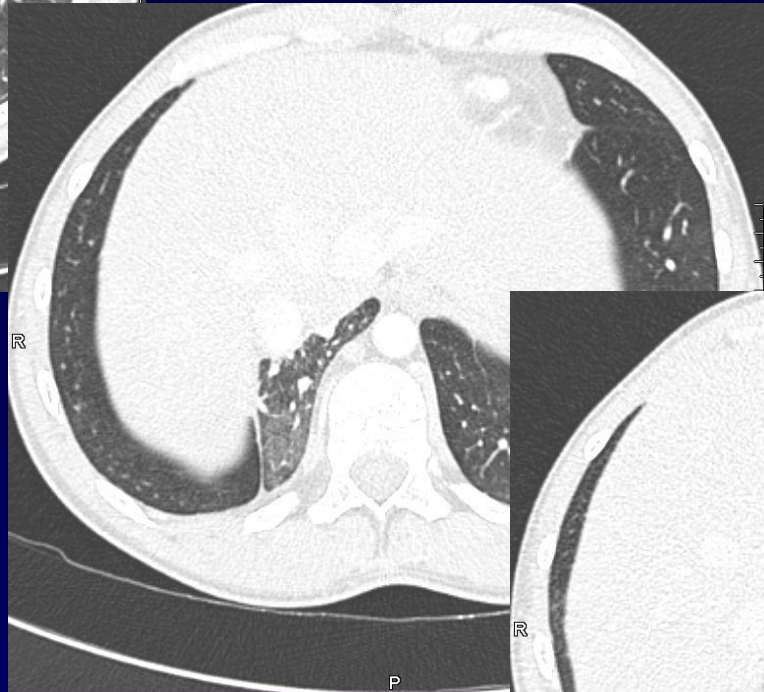


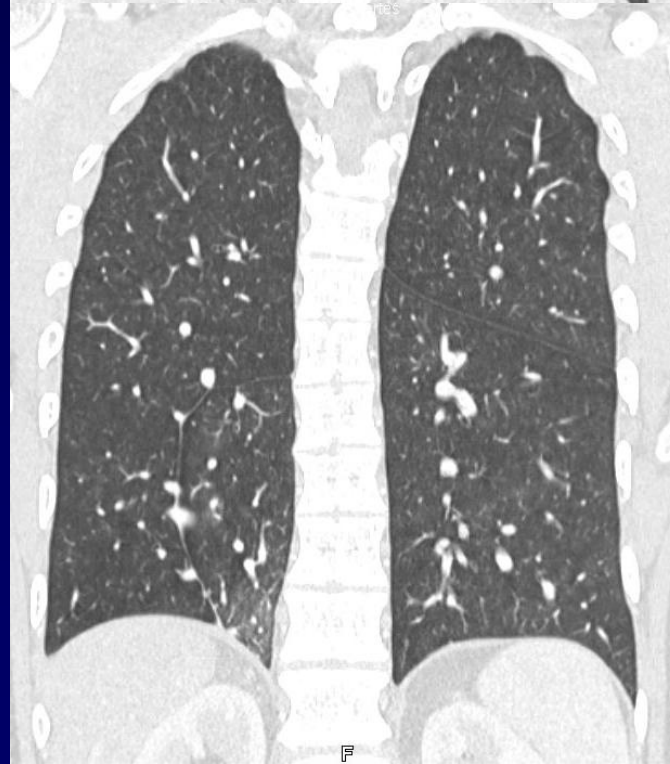
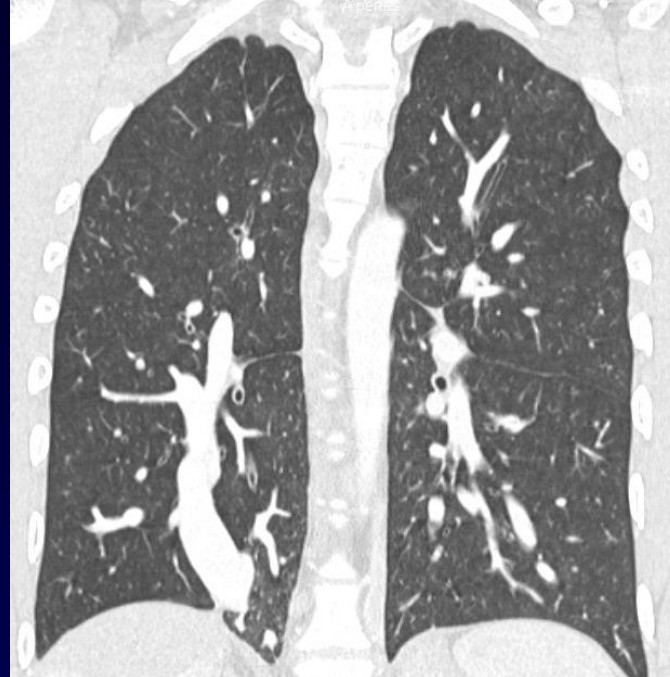








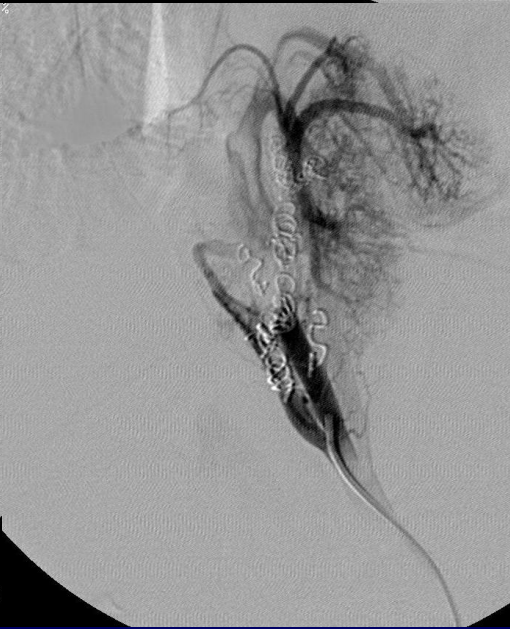
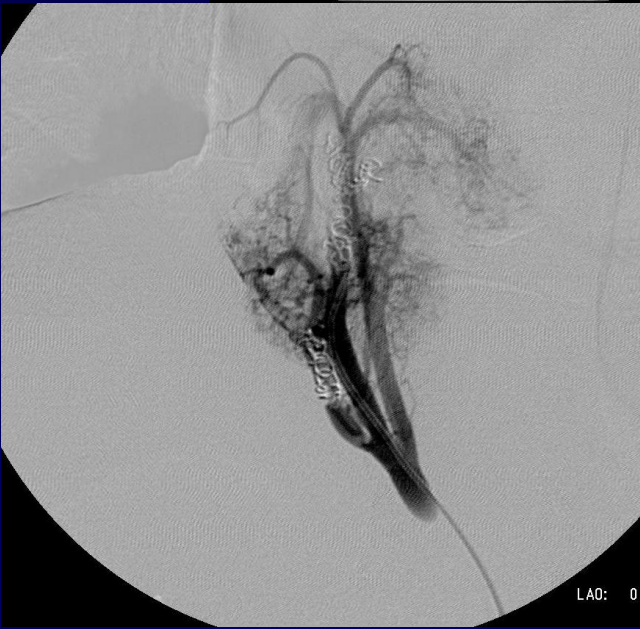
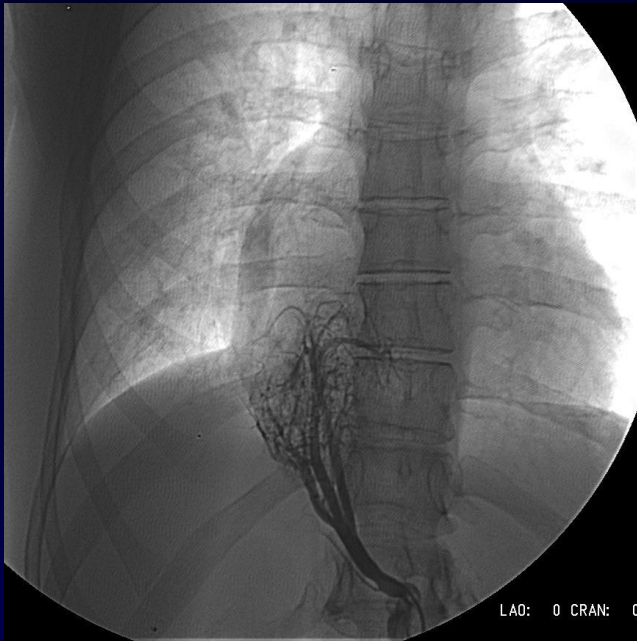






Diagnostic

- Syndrome de cimenterre
- Séquestration
- Pour information : le débit dans la veine de cimenterre est de 1800 mL/min (calculé par IRM) et le débit au niveau de l'aorte thoracique ascendante est de 2400 mL/min.
- C.A.T.?





Discussion

- Traitement de la séquestration
- Traitement du RVPA